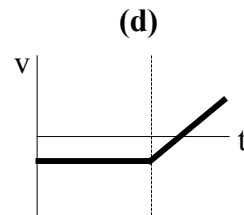
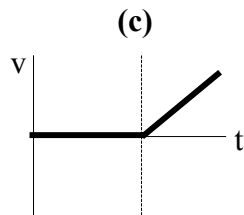
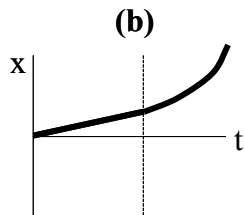
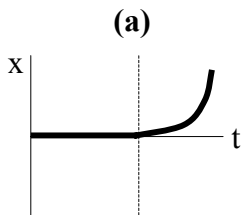
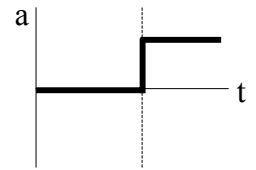


Recitation Instructor (circle one): Moe Larry Curly Groucho Chico Harpo

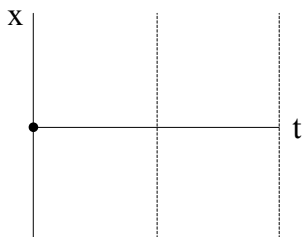
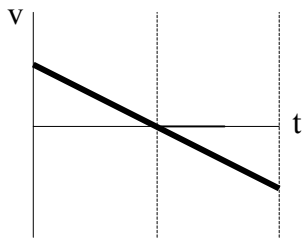
Class time (circle one): 10:30 11:30

QUIZ #1

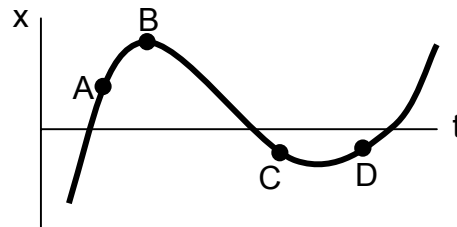
1) The acceleration of a particle is given by the graph on the right. Below are possible graphs of position or velocity for the particle over the same time interval. *Circle every graph that could be correct.* There may be more than one correct graph.



2) A particle starts at the origin. Its velocity is given by the top graph. Sketch its position in the bottom graph.



3) A particle's motion is given by the graph below. Some points on the graph are labeled.



- a) For which point(s) is the particle's speed zero? _____
- b) For which point(s) is the particle's acceleration negative? _____

4) Sam drives his car from A to B in a straight line taking 5.0 hours. For one-third of the total distance he travels at an average speed of 50 km/h. For the remaining two-thirds he travels at an average speed of 30 km/h. What is the total distance from A to B?